

Website Content

Attainment of POs (Direct and Indirect Assessment Models)

Student learning outcomes are assessed through Attainment of **Course Outcomes** and **Program outcomes**.

Assessment of attainment of Course Outcome (CO):

Course Outcome is based on both direct and indirect assessments where the weightages are 90% and 10% respectively. The assessment process for CO attainment is shown in Fig.1. The indirect CO assessment is feedback collected from the students for each Course at the end of every semester.

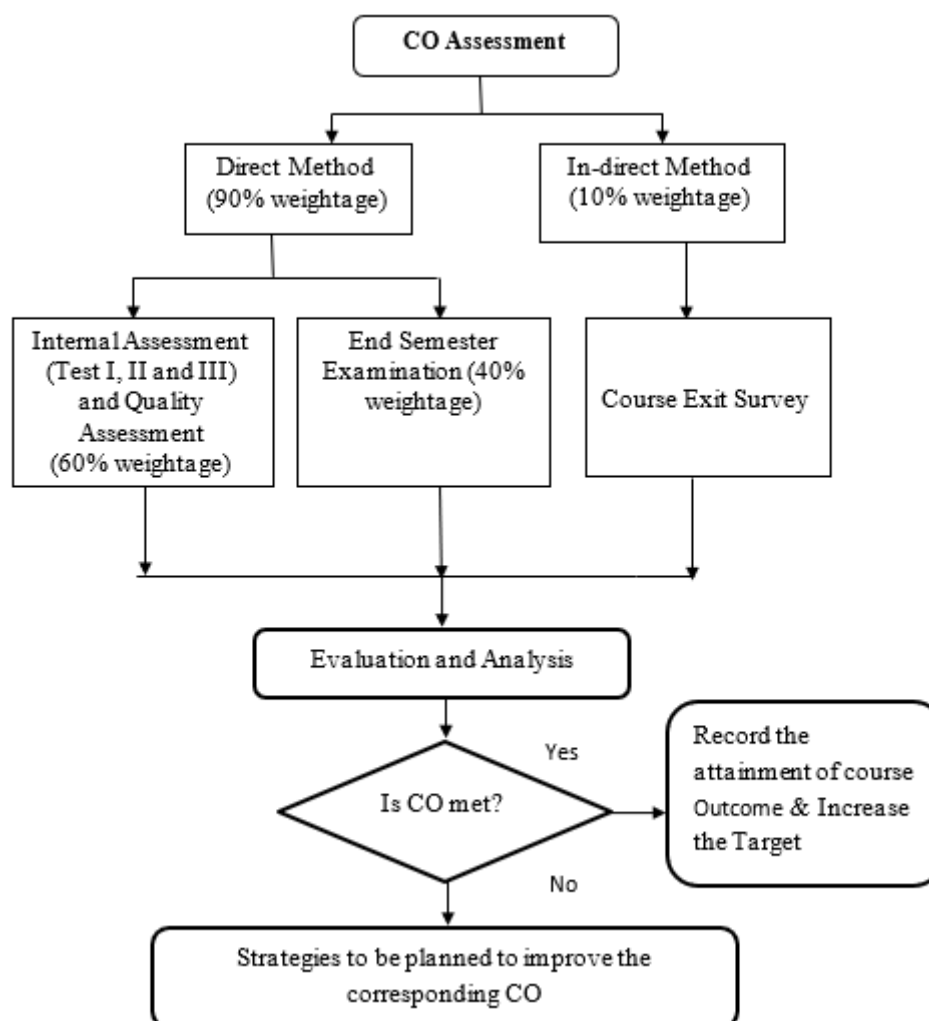


Fig 1 Course Attainment Process

Direct method

Continuous Assessment: It is based on the sessional work and consists of internal assessments, quality assessments, term paper presentation, seminars, subject-related projects, etc. **Continuous assessment** marks will be awarded based on the continuous assessment made during the semester as per the guidelines issued from time to time by the common curriculum development cell.

End Semester: The Institute conducts final examinations in all subjects during the last fortnight of each semester in November and in April every year.

Indirect Method

The HoD conducts class committee meetings twice a semester with the representatives of each class. **Feedback** is collected from students regarding the teaching, and the orientation towards the attainment of COs. Deficiencies/ Deviations indicated by the students are communicated to the faculty for necessary corrective actions. At the end of the semester, a Course exit survey is conducted to assess the satisfaction level of the students towards the attainment of course outcomes.

Indirect assessment is carried out by conducting surveys among Graduates, Employers, Parents and Alumni.

Program exit survey

Program exit survey is conducted and the feedback is collected from the graduates at the time of completion of the Program.

Alumni survey

The feedback from the Alumni is collected through a set of questionnaires.

Employer survey

Employers provide their feedback on the skills, knowledge, and values of the employees (graduates) through a survey.

Parent's Feedback

The feedback from the Parents are collected during Parent's meet and also through the mentor-parent discussion.

The results of the direct method and indirect method are combined and the final level of attainment of course outcome is obtained for each subject. Based on the attainment of the Course Outcomes, the accreditation committee suggests suitable modifications to be incorporated in the level of question paper setting, valuation of answer sheets and direct assessment methods.

Assessment of attainment of Program Outcome (PO)

The assessment of attainment of POs is effectively carried out and PO attainment process is shown in Fig. 2. This process is carried out at the end of each semester. The final attainment of POs for a particular batch of students is done at the end of 4 years. It includes two components, i) attainment of COs ii) Exit survey from graduates during the time of graduation.

Based on the assessment to enhance the attainment of POs, the **Course Outcomes** are revisited, brainstormed and **rephrased focusing on the improvement** for the subsequent batches. The revisions are documented and presented in the Curriculum Development Cell, Board of studies and Academic Council meetings.

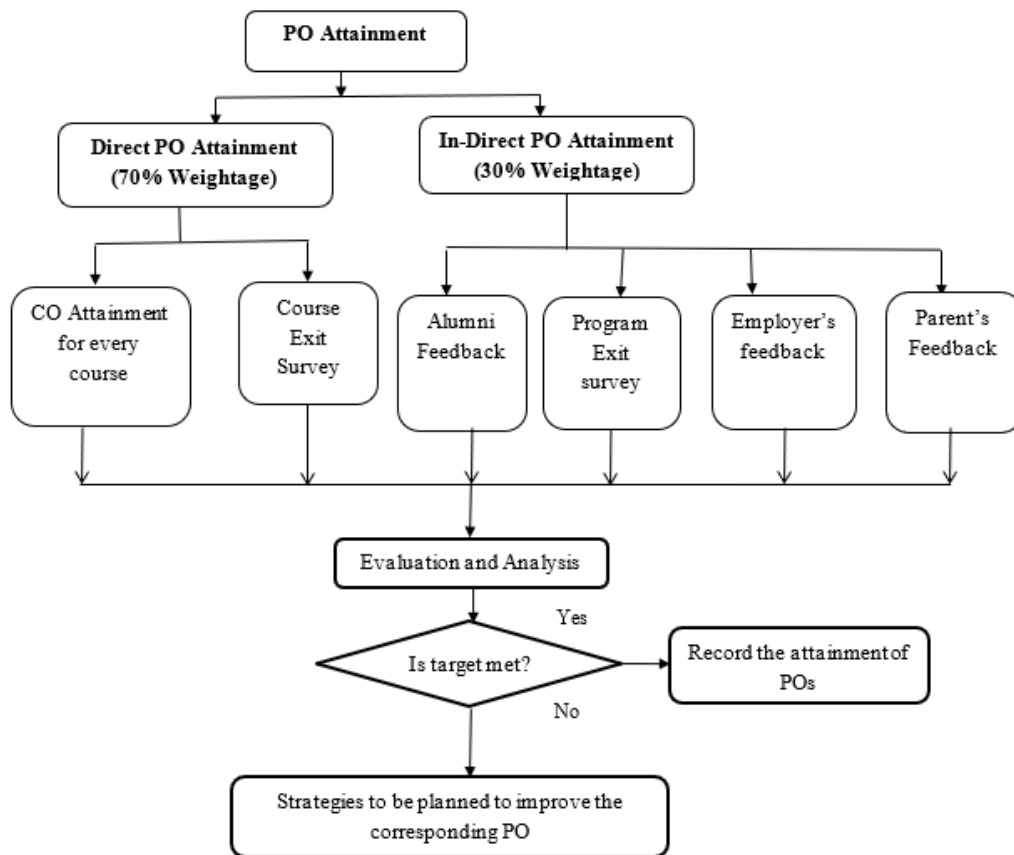


Fig 2 PO Attainment process

The POs are evaluated based on the targets set for direct and indirect methods of assessment and attainment is recorded as shown in Fig. 2.